

Walkability Beyond the Right-of-Way

Chester Harvey

Director, Transportation Policy Research Group

National Center for Smart Growth

University of Maryland

Roundtable: Baltimore Avenue Smart and Connected Communities

November 10, 2023



What is the transportation field overlooking in pedestrian planning?





E-W Hwy @ PG Plaza: Walk Score = 92 ("Walkers Paradise")

Carroll Ave, Takoma Park: Walk Score = 87 ("Very Walkable")



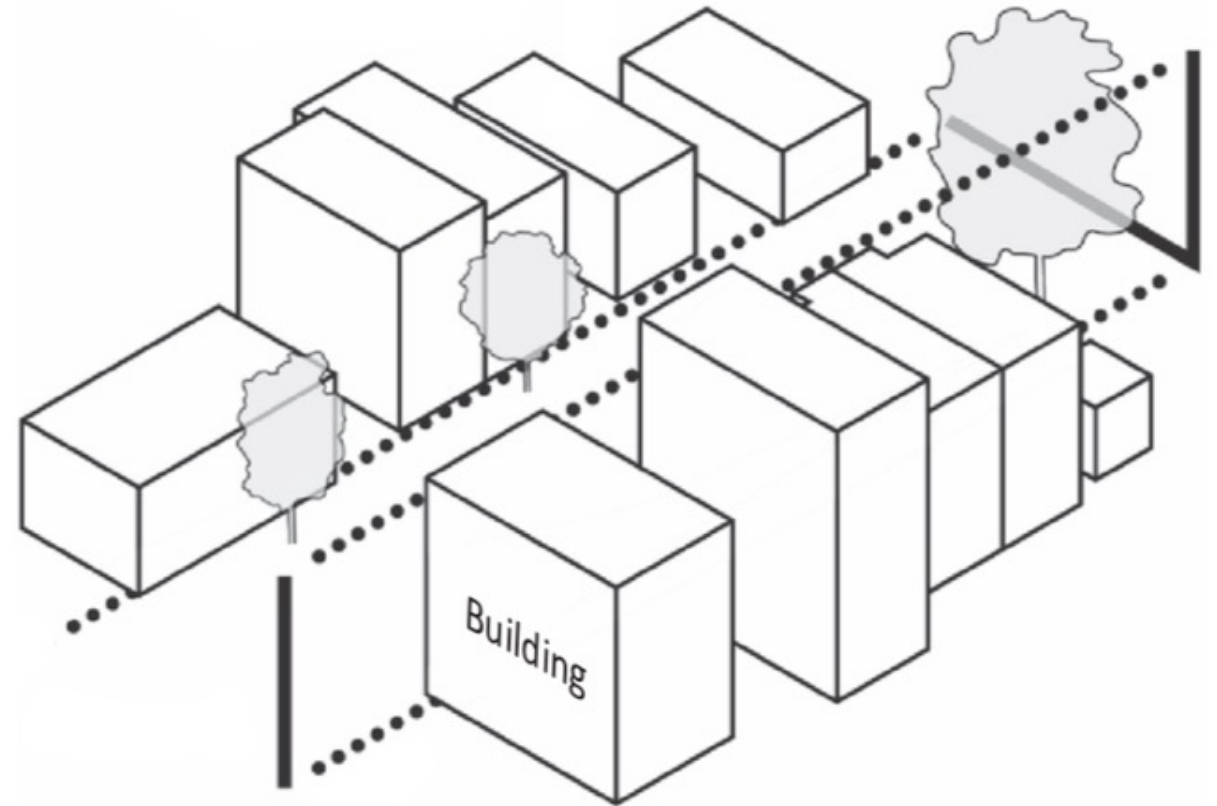
An architectural line drawing of a city street scene. The drawing is in black and white with some green highlights. It shows a street with buildings on both sides, sidewalks, and people walking. There are trees and plants along the sidewalks. The street has a crosswalk and a bicycle lane. The drawing is a perspective view looking down the street.

***Enclosure
Human Scale
Complexity
Transparency
Imageability***

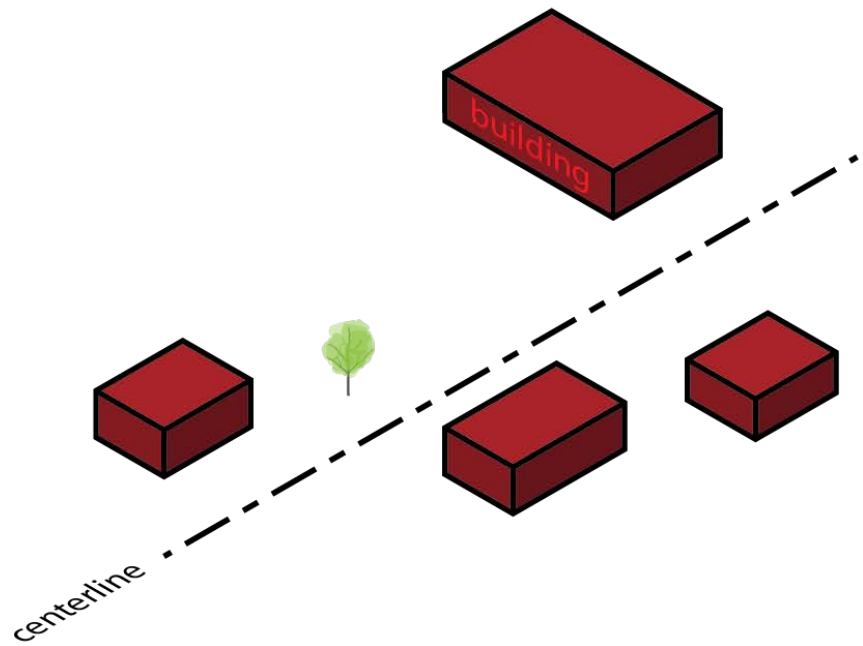
(Ewing et al.)

Measuring Streetscape Design Qualities

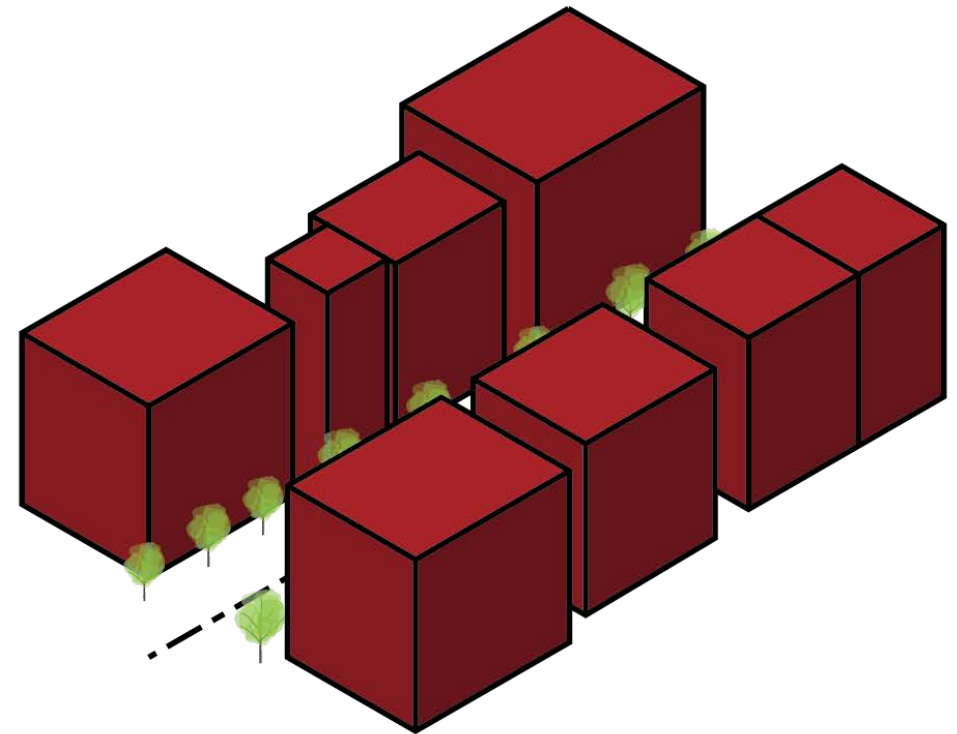
- Buildings frontages
 - Continuity
 - Height
 - Setback
 - Active Uses
- Street trees



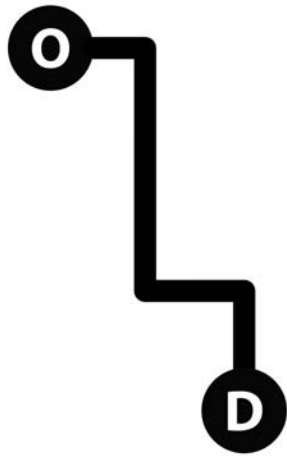
More Severe Crashes



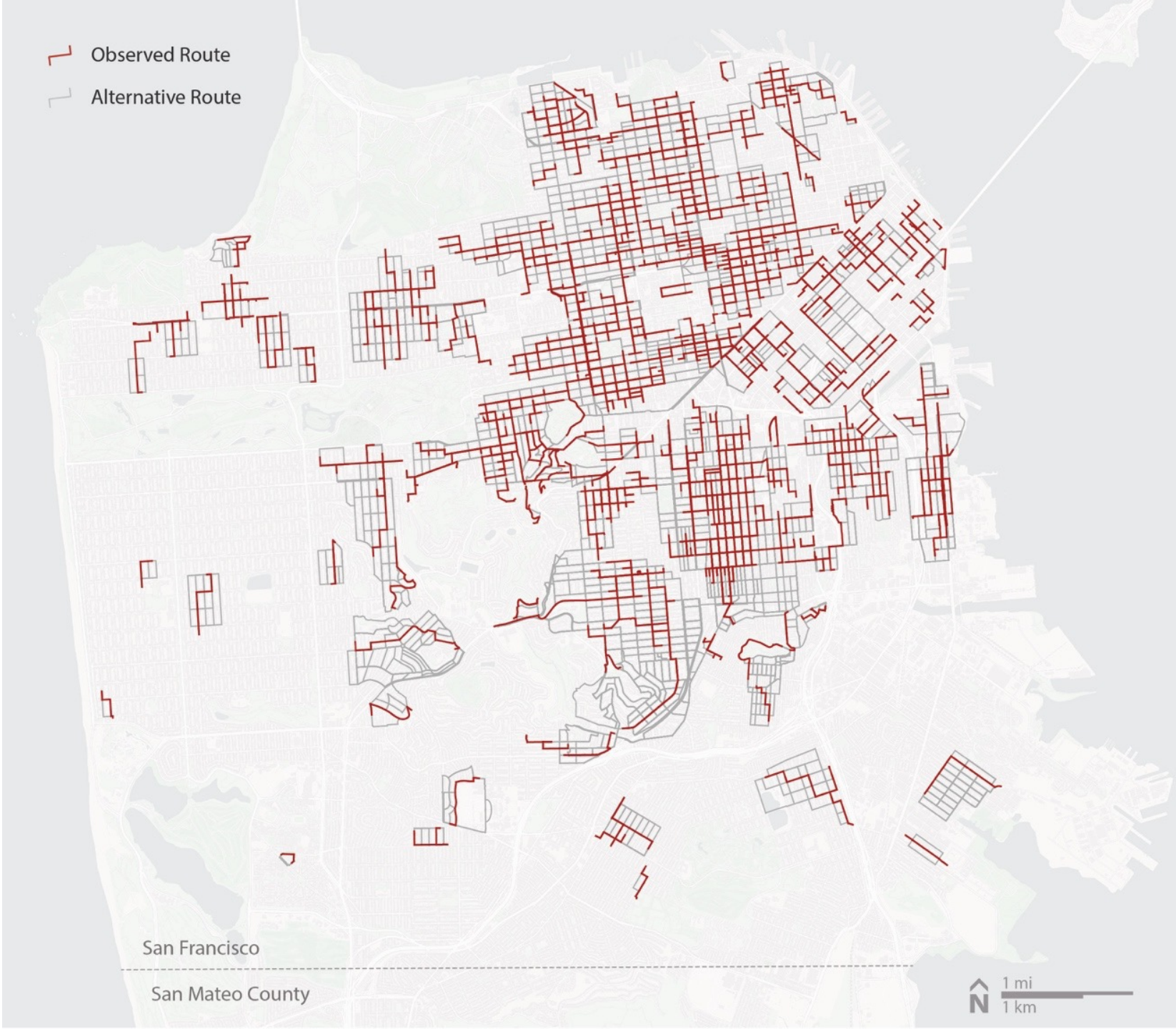
Less Severe Crashes



GPS Observed Walking Routes



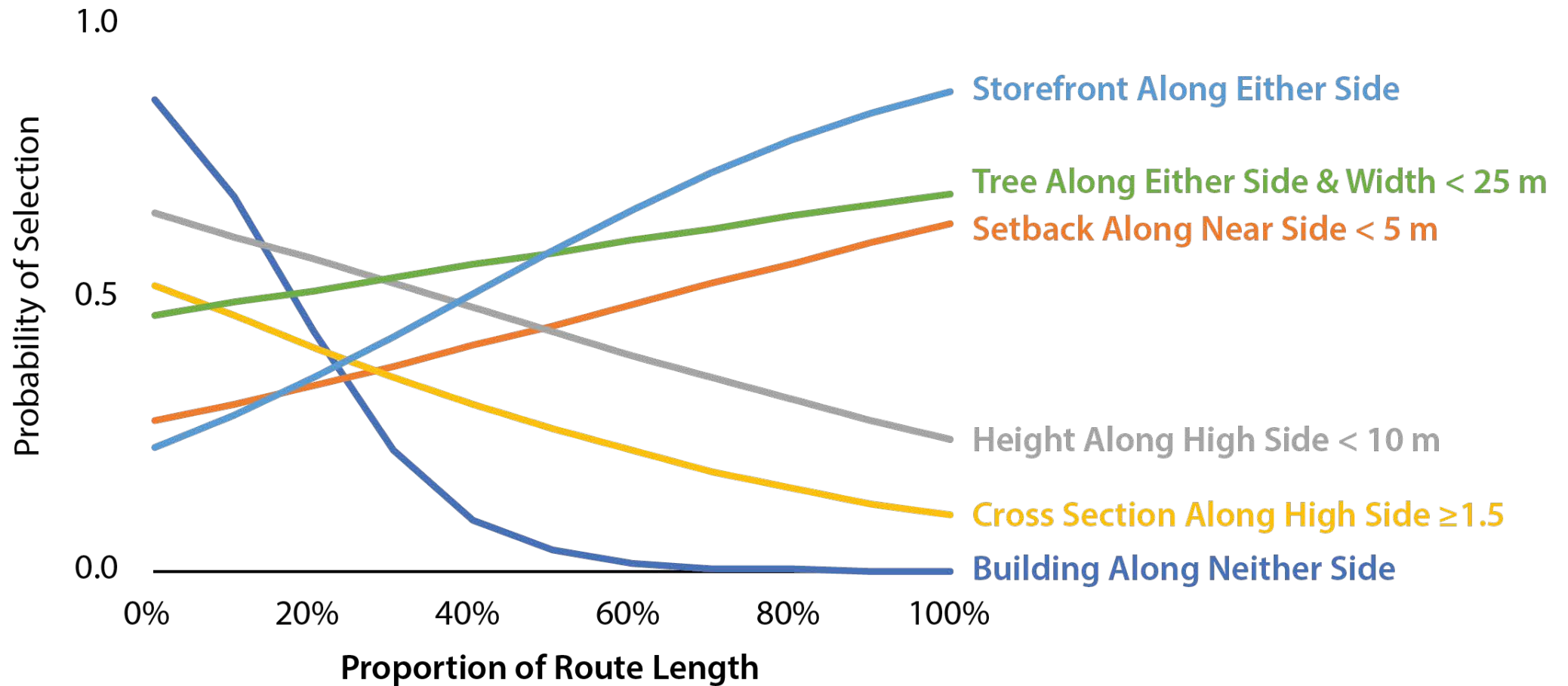
- Observed Route
- Alternative Route

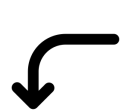


Walking Route Preferences

More
Preferrable

Less
Preferrable

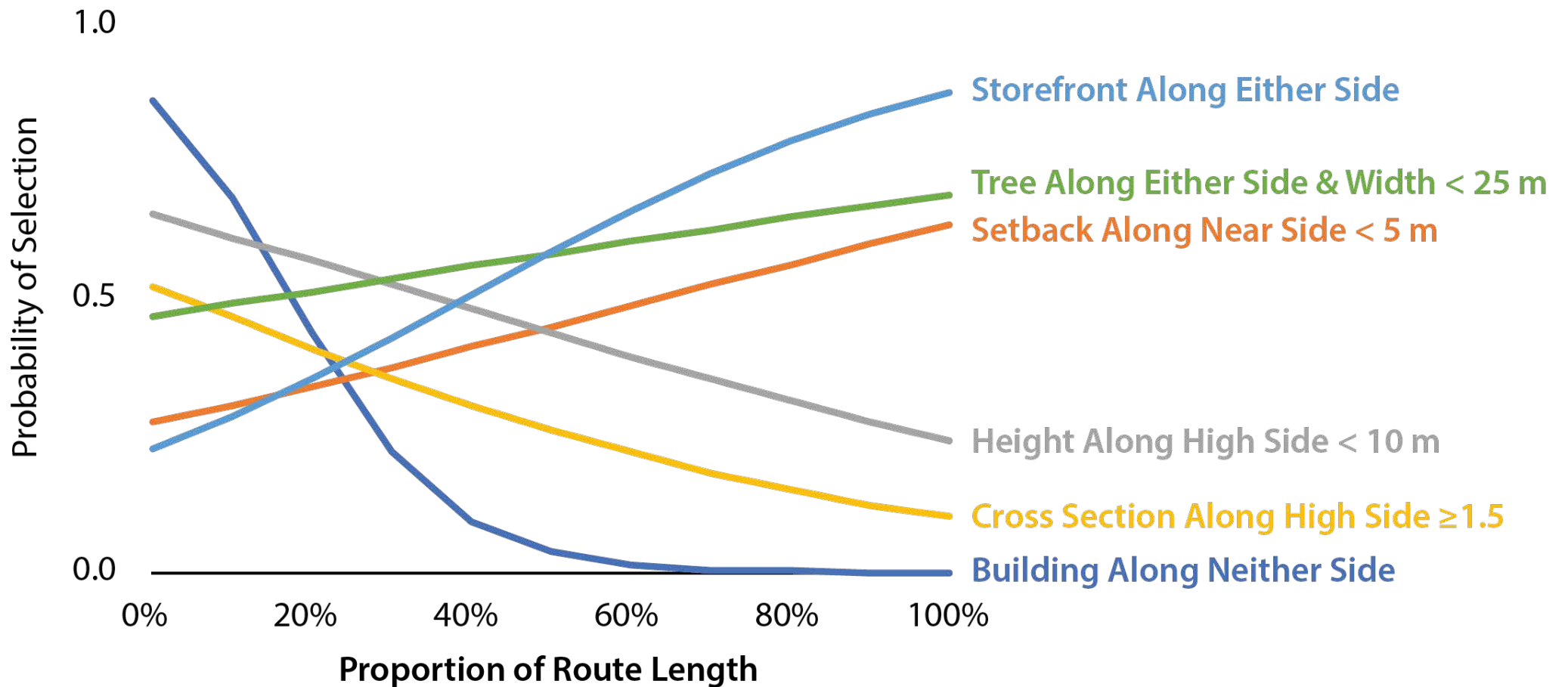


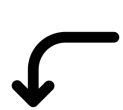


Who has access to more walkable design?

More
Preferrable

Less
Preferrable

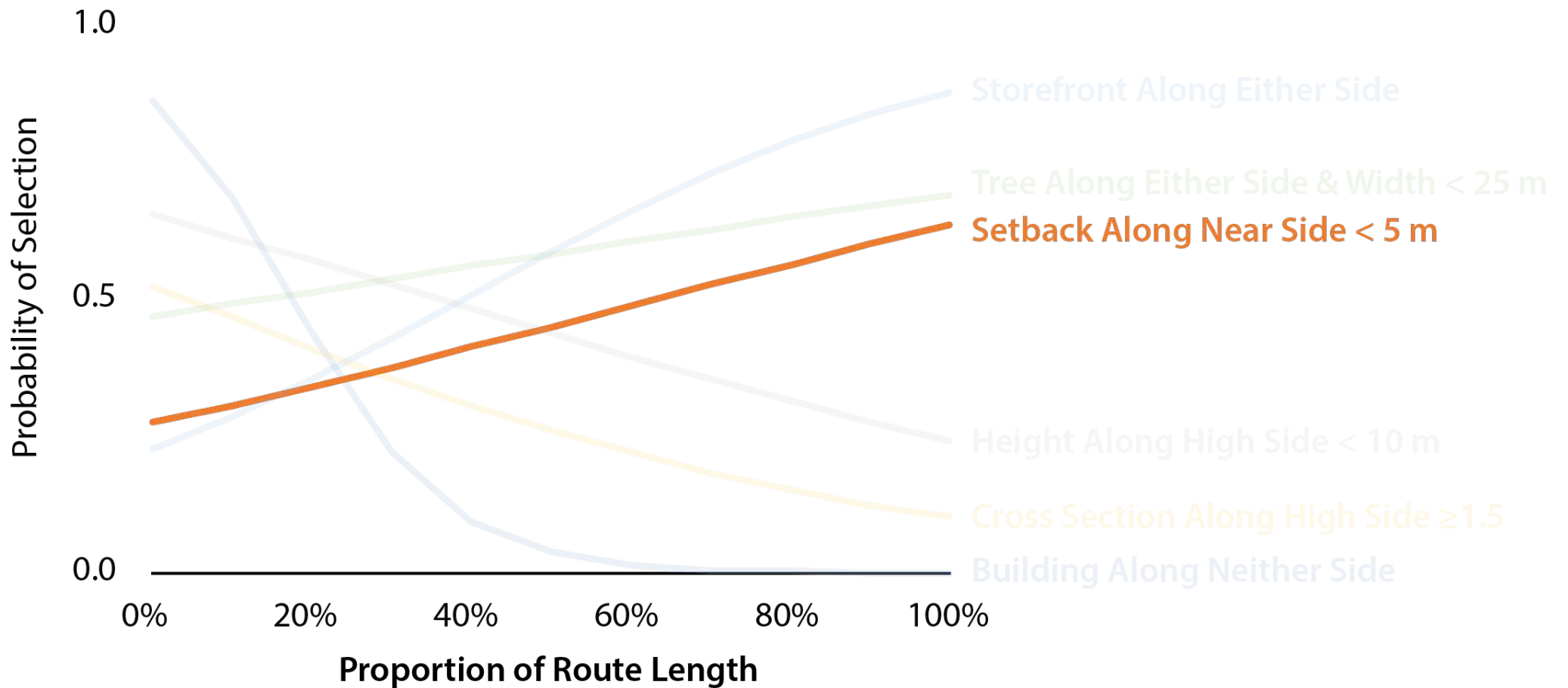




Who has access to more walkable design?

More
Preferrable

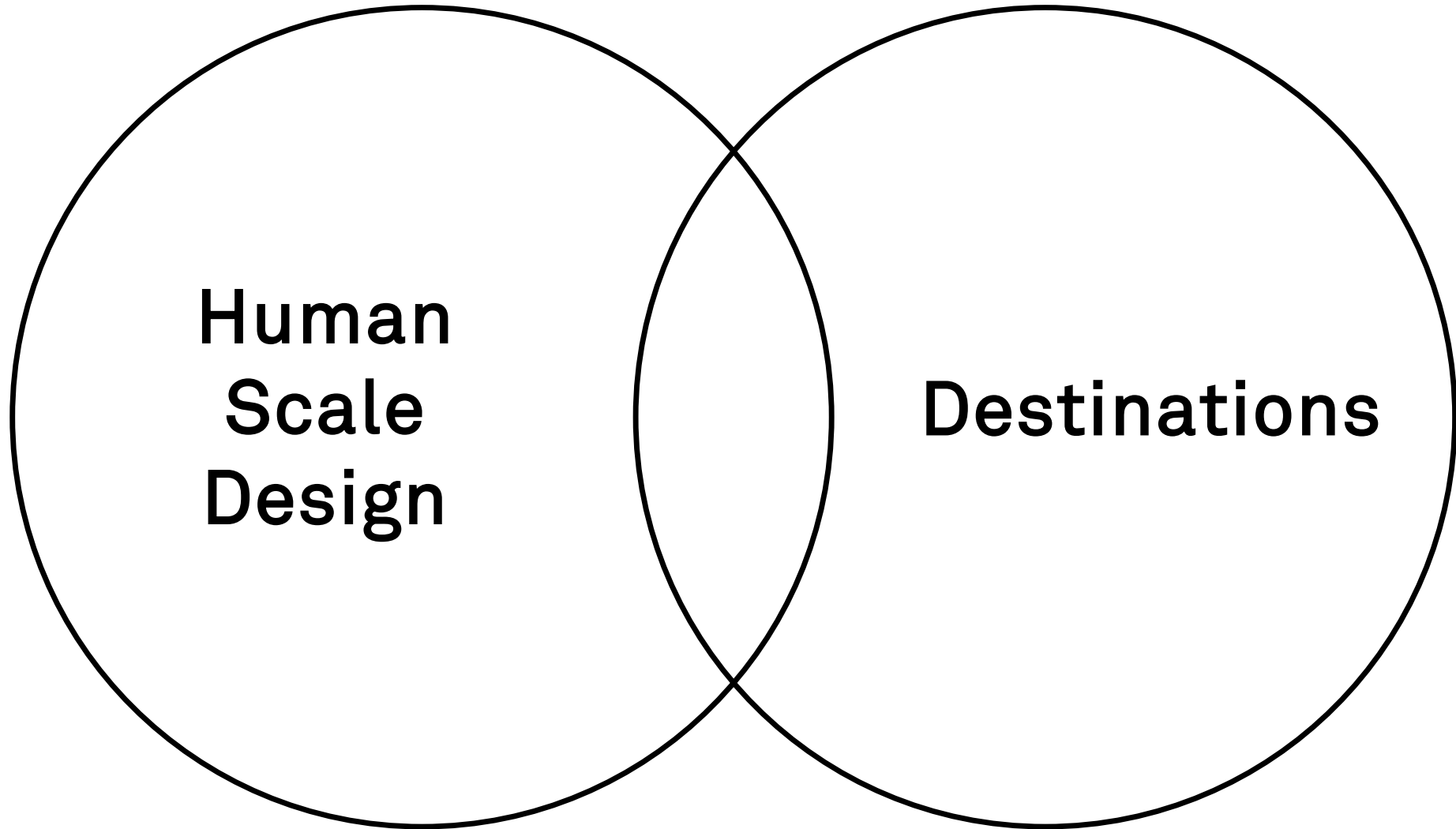
Less
Preferrable



Distance to Buildings: A Rough Indicator of Human Scale Design



↪ **Where do they align?**



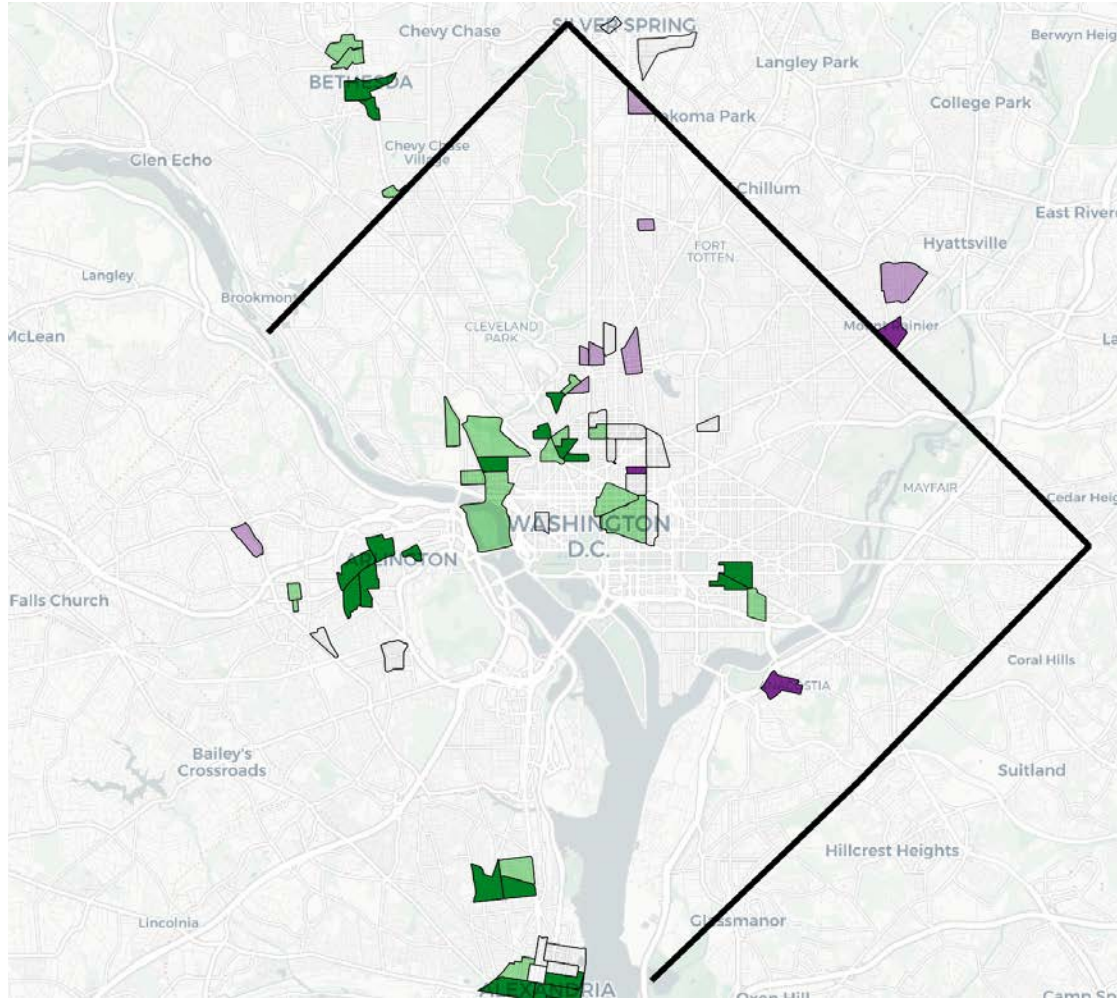
**Human
Scale
Design**

Destinations

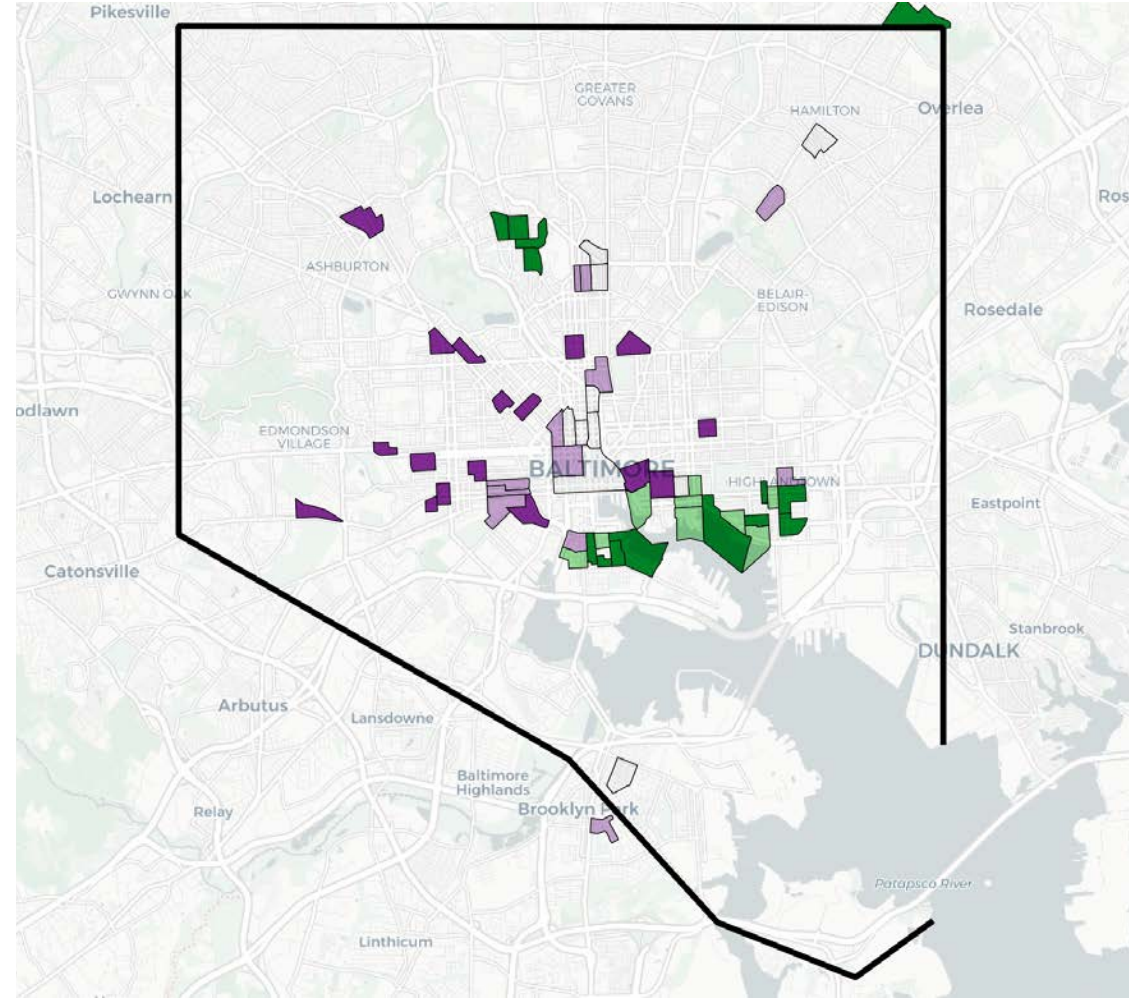
Human Scale *and* Destinations

 EPA Smart Location Database

Washington, DC



Baltimore



Most Advantaged



Least Advantaged

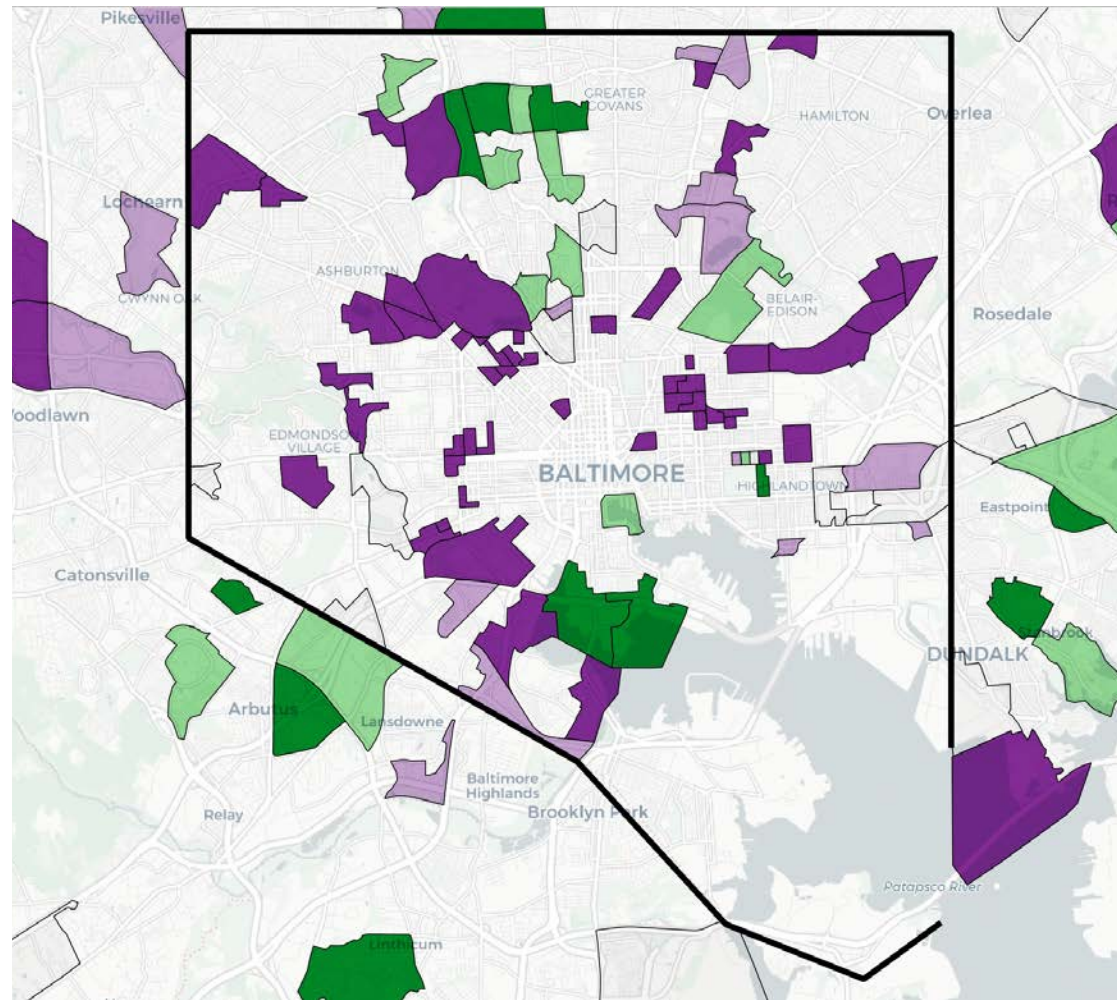
EPA EJScreen

Mismatch → Destinations but Lack of Human Scale

Washington, DC



Baltimore



Most Advantaged

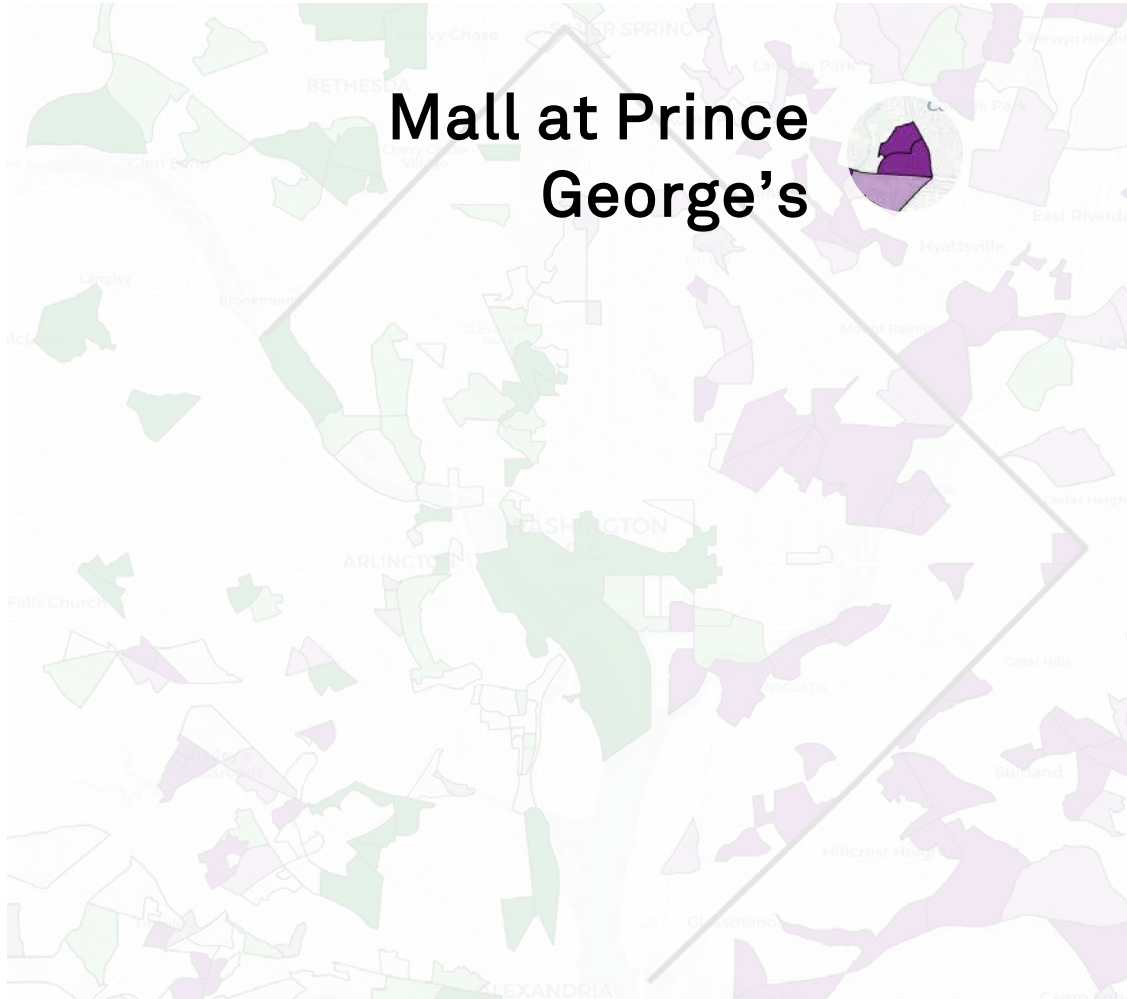


Least Advantaged

EPA EJScreen

Mismatch → Destinations but Lack of Human Scale

Washington, DC



Most Advantaged



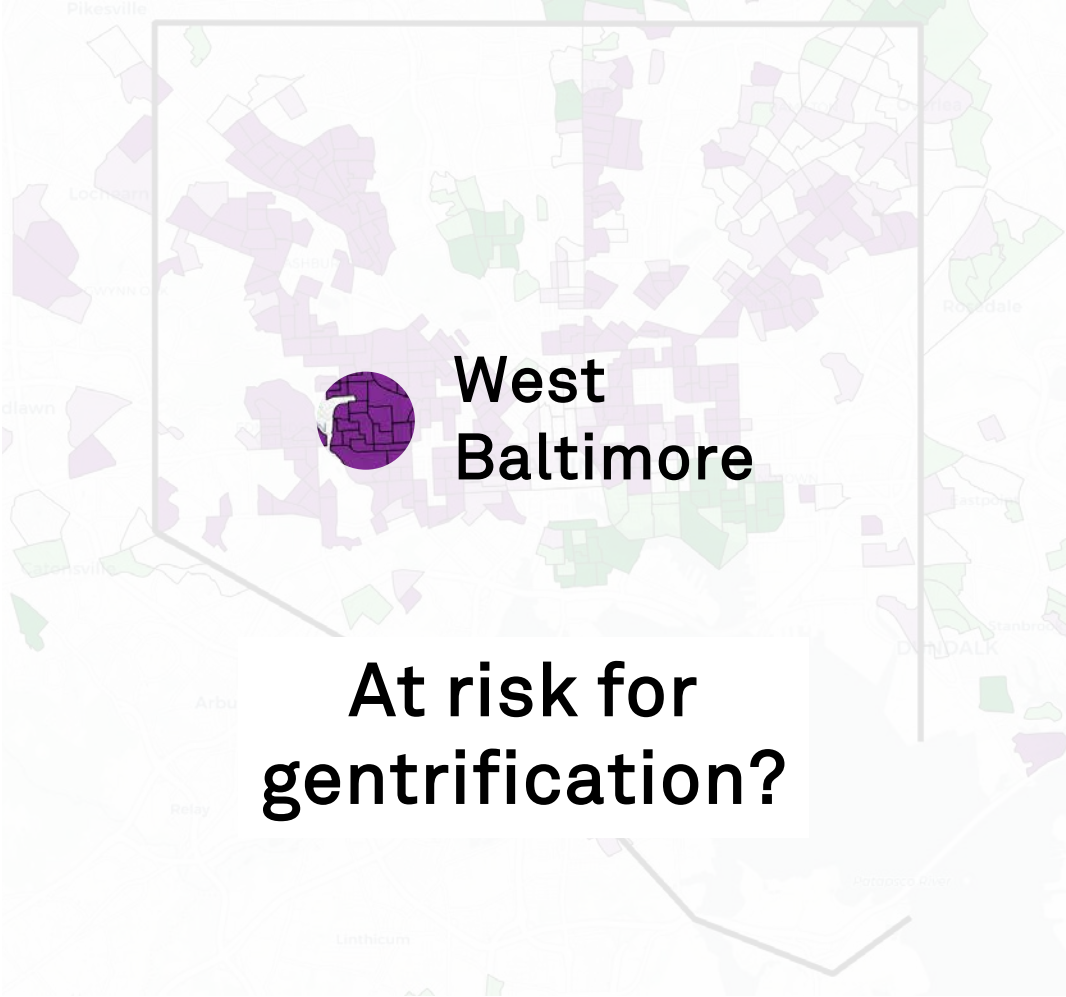
Least Advantaged

EPA EJScreen

Mismatch → Human Scale but Lack of Destinations



Baltimore



Most Advantaged



Least Advantaged

EPA EJScreen

Chester Harvey

cwharvey@umd.edu

