

How can I help?

At home...

- ❖ Incorporate pervious surfaces onto your property by...
 - Utilizing rain barrels and rain gardens
 - Installing permeable pavers



For your business...

- ❖ Converting impervious surfaces into porous surfaces
- ❖ Creating bioswales, green roofs, and using rain barrels



Want to Learn More?

Go Online at....

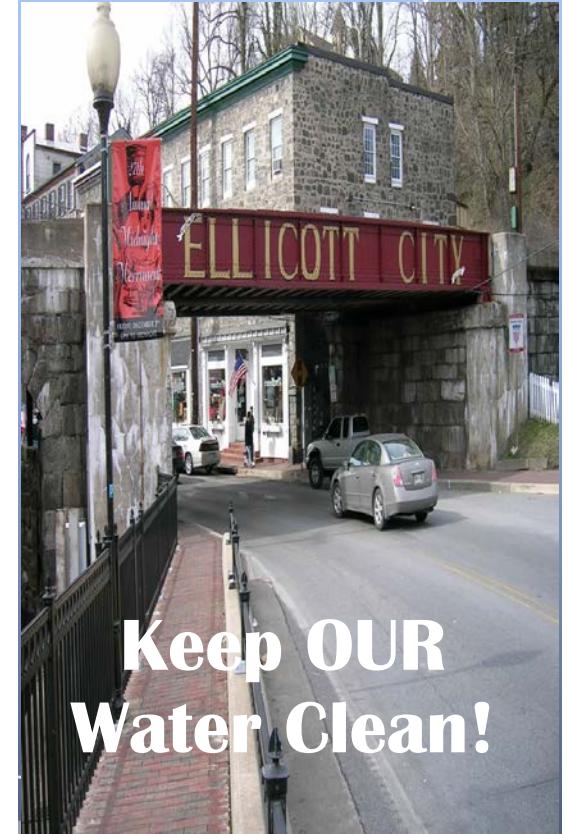
- ❖ www.cleanwaterhoward.com
- ❖ <https://www.cleanwaterhoward.com/stormwater-solutions/learn-more>
- ❖ <http://livegreenhoward.com/faqs>

Or in Person at...

HOWARD COUNTY
GOVERNMENT, MARYLAND
3430 COURT HOUSE DR
ELLCOTT CITY, MD 21043



Want to help your community?



**Keep OUR
Water Clean!**



7 ways you can help Howard County



1. **Slow the flow-** Re-direct rain water onto grassy, absorbent areas.



2. **Stash the trash-** Did you know trash left on the side of the road is normally washed into local streams? Pick up and properly dispose of all of your trash!



3. **Refrain from the drain-** Storm drains are only for excess water!!



What is stormwater?

❖ **STORMWATER** is water that comes from rainfall or melted snow/ice that is not absorbed by nature and pervious surfaces, and flows into unwanted areas.

❖ **STORMWATER RUNOFF** picks up anything in its path - chemical pollutants, litter, and other wastes which eventually flow into local water bodies, subsequently into the Chesapeake Bay.

4. **Scoop the poop-** Put your pet waste where it belongs- in the trash!



6. **Quash the wash-** Reduce the amount of chemicals in stormwater by using commercial carwashes!

5. **Enable the label-** Always read the instructions! Especially on fertilizer and other outdoor products.



7. **Landfill the pill-** Medicines belong in the trash, not the toilet! Did you know we cannot remove these chemicals from water?