

# LAKE KITTAMAQUUNDI: PLAYFUL MODERNIST PARK

## GOALS:

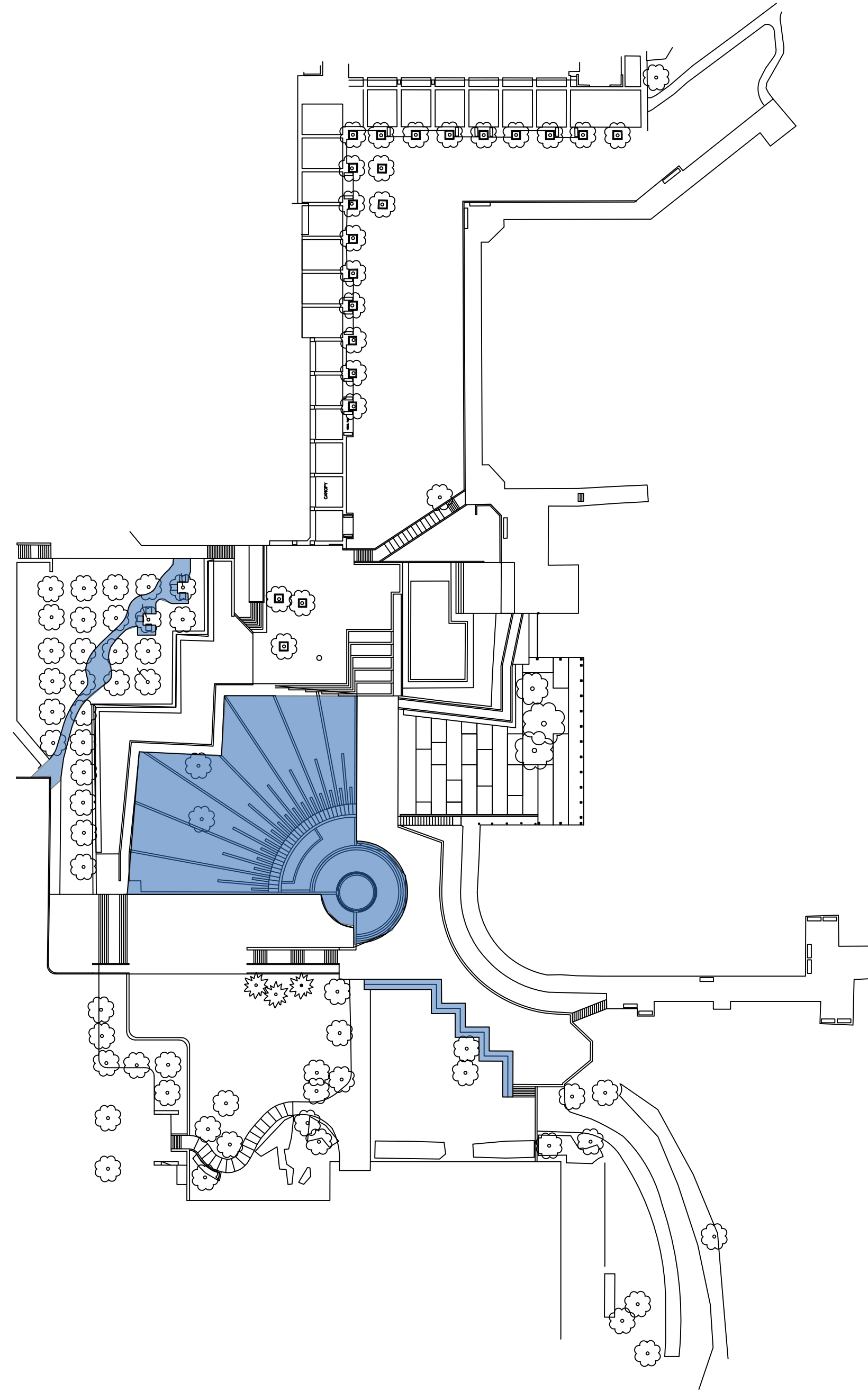
- Accommodate the needs of a growing Columbia.
- Retain and incorporate historic modernist elements.
- Demonstrate stormwater management techniques.

## SITE CONTEXT:



Columbia Mall to the west; Lake Kittamaquundi to the east.

## OPPORTUNITIES:



Historic modernist elements to preserve and use as design features.



Z walls.



Historic fountain and lawn.



Curved path through grid of trees.

## CHALLENGES:



Fragmented spaces.

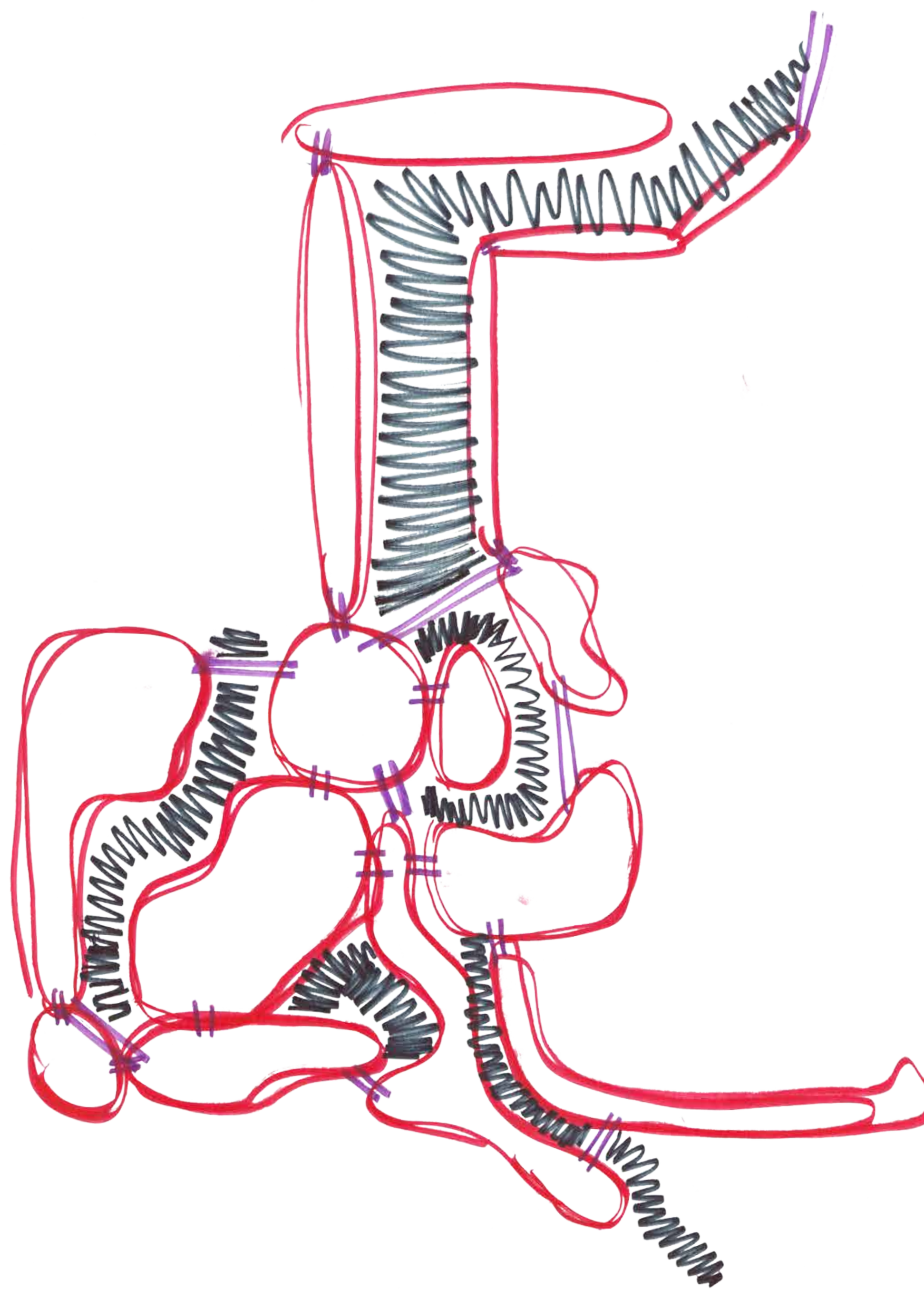


Main features are very steep.



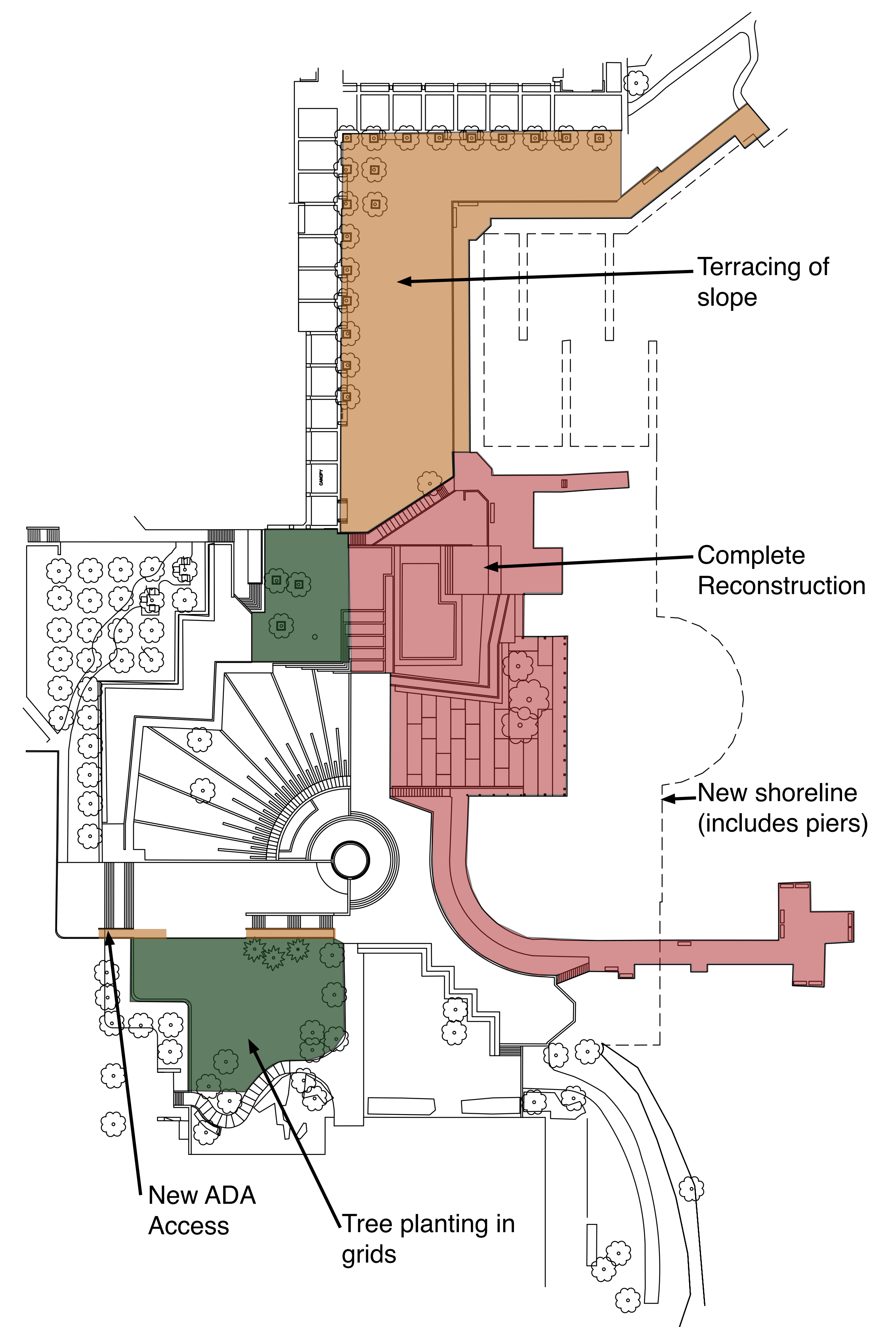
Outdated fixtures/railings do not match modernist style.

## A Fragmented Site:



Currently, the site is composed of many small spaces (red circles), which are fragmented by narrow access paths (purple lines) and are not large enough for today's Columbia. Black shows areas that are not traversable by visitors. There is no ADA access to the park.

## MAJOR CHANGES:





- ❶ New tree bosques continue the existing grid and provide shade.
- ❷ ADA accessible paths allow everyone to access the park.
- ❸ A widened main walk relieves crowding and can accommodate tents.
- ❹ New z-walls complement the existing historic wall.
- ❺ Platforms allow for viewing of fireworks or for parties/events.
- ❻ Terracing makes steep slopes usable for large crowds.
- ❼ A stage for large events and new bell carrillon are located on axis.
- ❽ A stormwater demonstration project uses plants to filter water. Boat rental access is provided along widened dock.



Plan view of improved and accessible Lake Kittamaqundi design with increased open space to meet the needs of Columbia's current residents, who number over 100,000.



Closeup of the demonstration wetland which will slow and filter water as it is released into the lake. Educational signs will explain this function.



The ADA access ramp to the docks provides an experience all its own. The Rouse Brothers statue has been relocated to the lower circular pavilion.