

# Assault Incidents in Howard County, Maryland

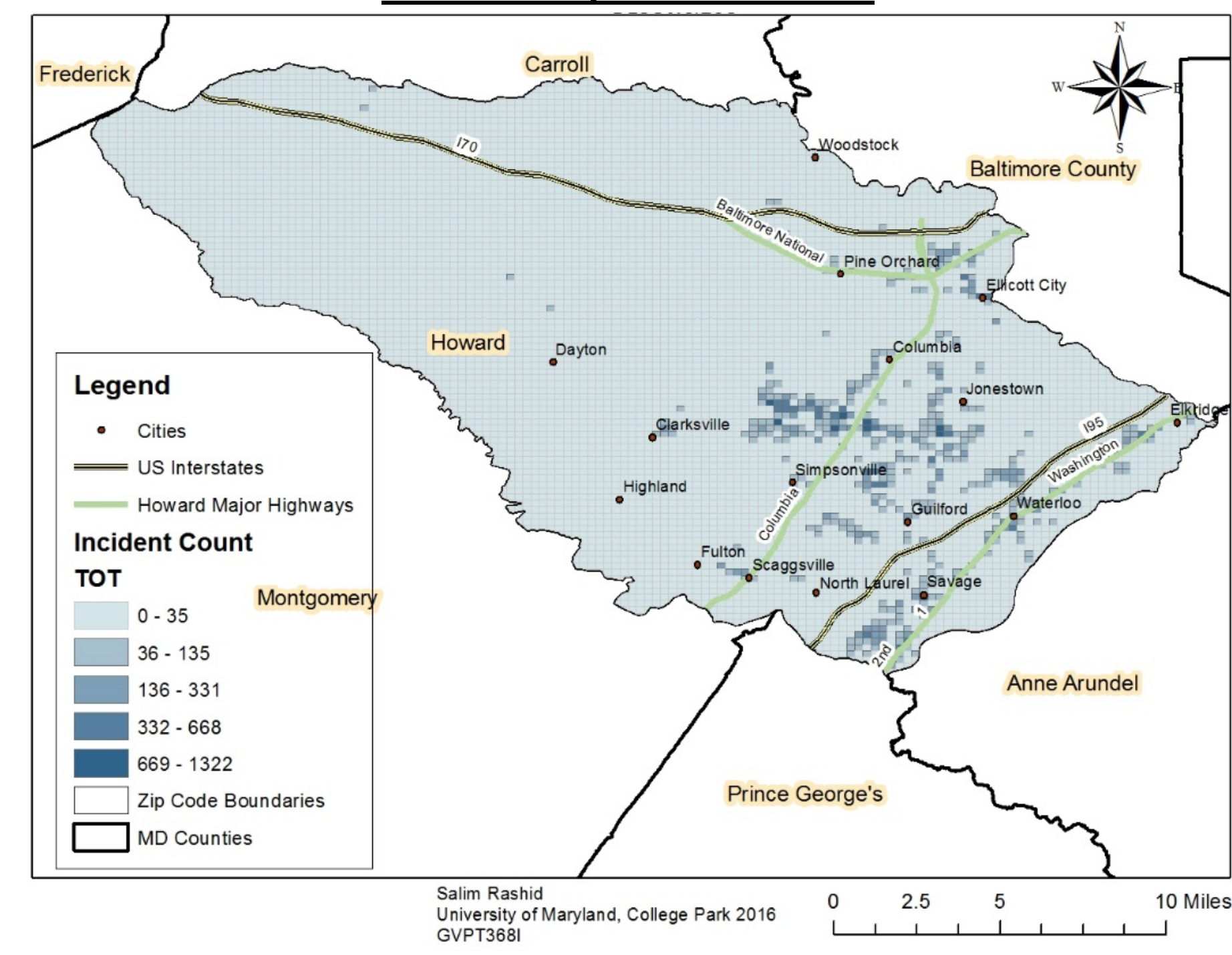
**Research Questions:**

Are there any spatial patterns of assaults in Howard County?  
 Are there any clusters, hotspots or outliers?

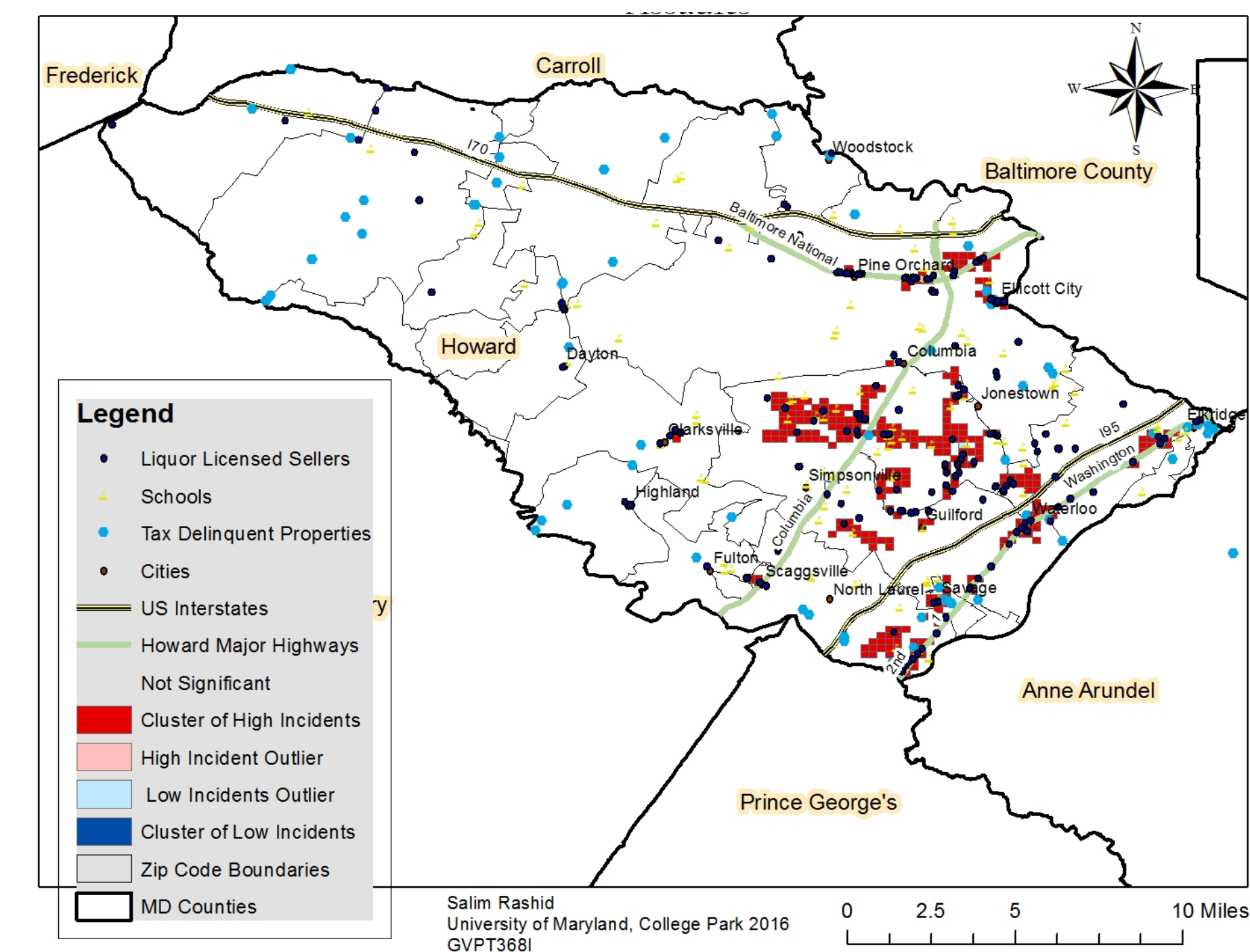
**Conclusion:** The choropleth map shows that there is a spatial pattern of assaults in Howard County. Most of incidents have occurred in cities, especially Columbia Town Center and on route 1. These incidents are clustered in these areas while few outlier of high or low number of incident were found.

From the GIS analyses we can tell that clustered areas need for more policing and further investigation is also needed to identify factors such as a density of population to explain the clustering in the areas.

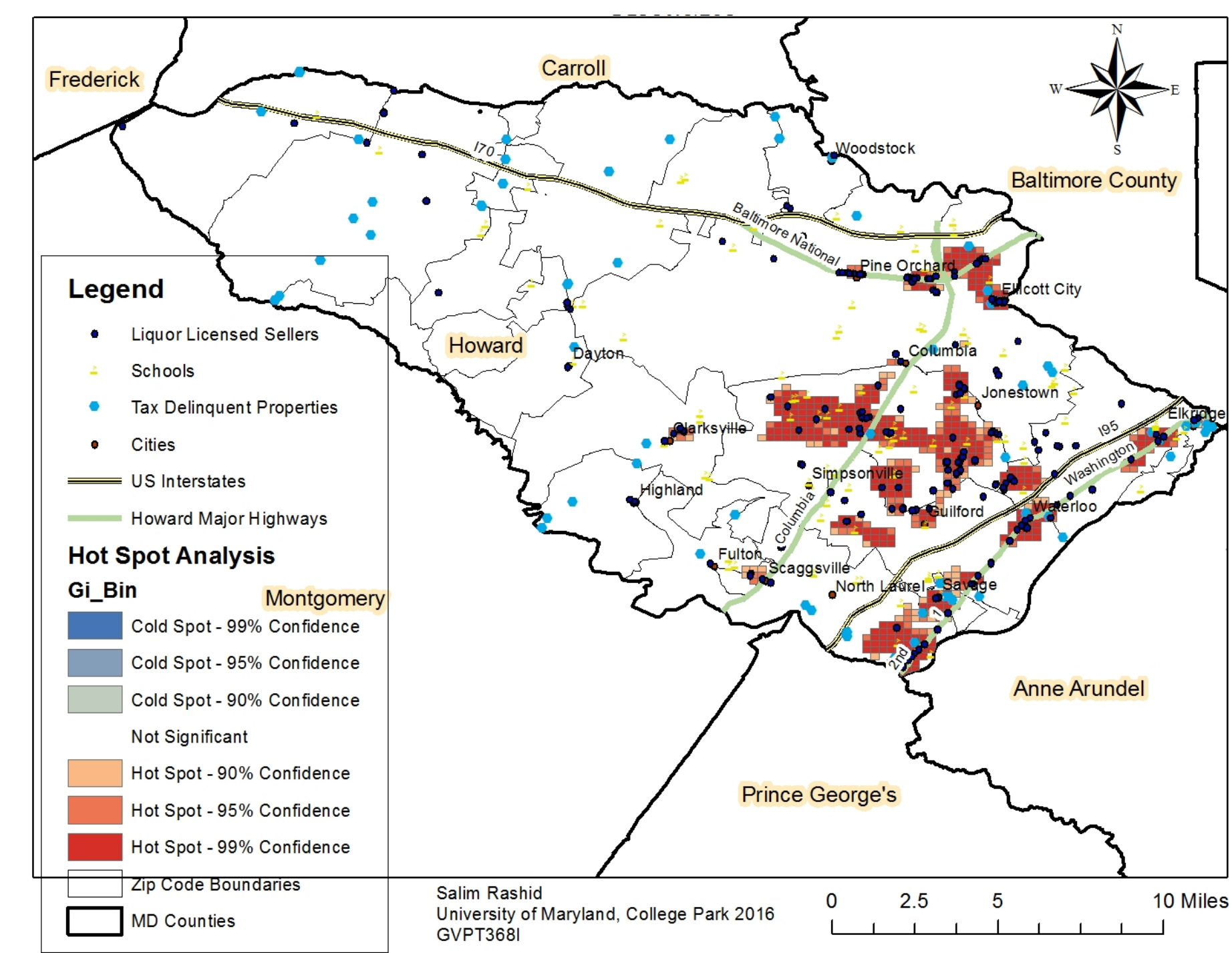
**CHOROPLETH MAP: ASSAULTS IN HOWARD COUNTY, 2005-2015**



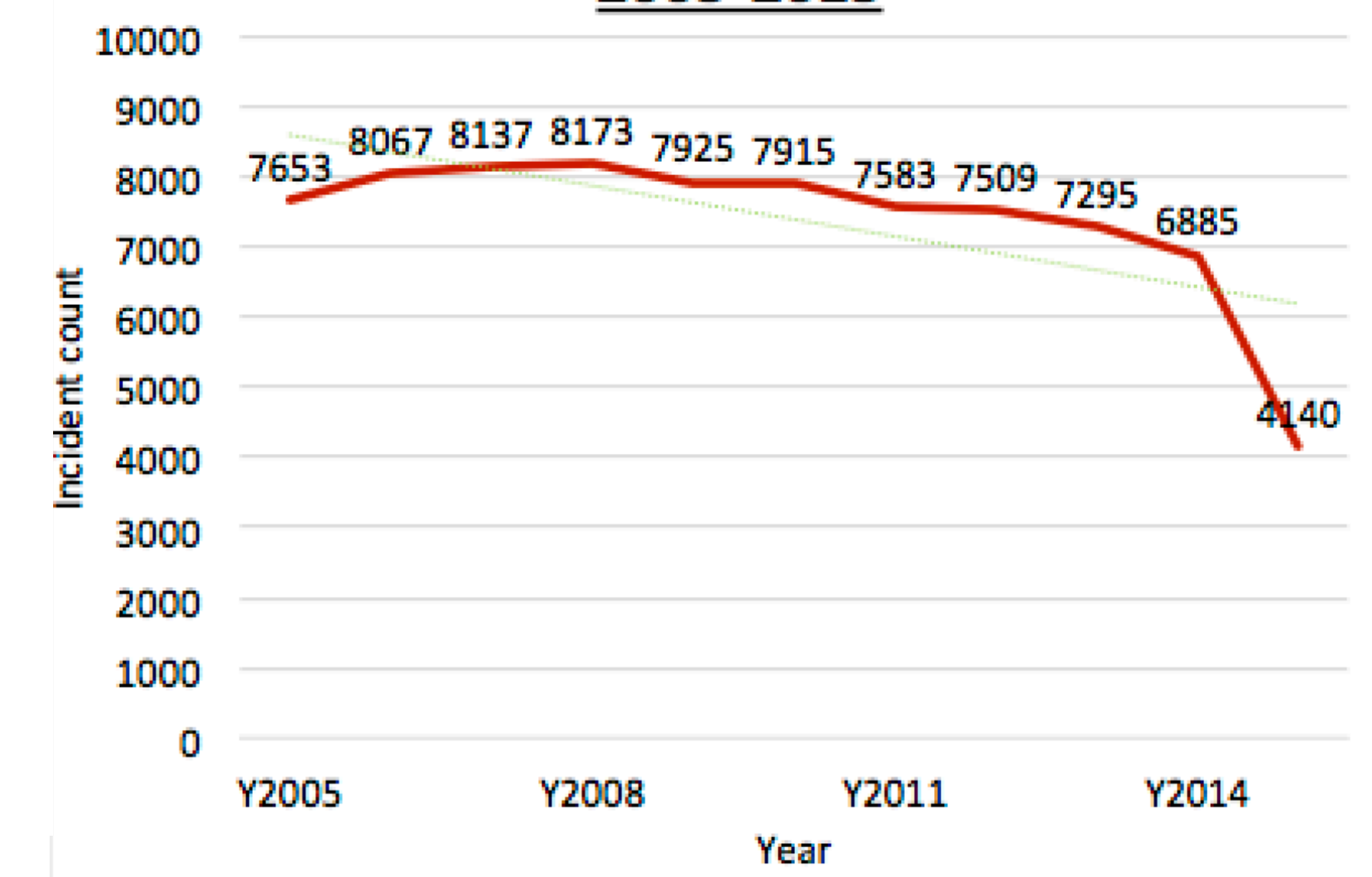
**CLUSTER AND OUTLIER ANALYSIS: ASSAULTS IN HOWARD COUNTY, 2005-2015**



**HOT SPOT ANALYSIS: ASSAULTS IN HOWARD COUNTY, 2005-2015**



**ASSAULT INCIDENTS IN HOWARD COUNTY, 2005-2015**



In 2008 we see that Howard county peaked at 8,137 incidents of assault. This being said, through the years Howard County has been on a downwards trend of assault incidents. With its lowest point occurring in 2015 with only 4140 incidents